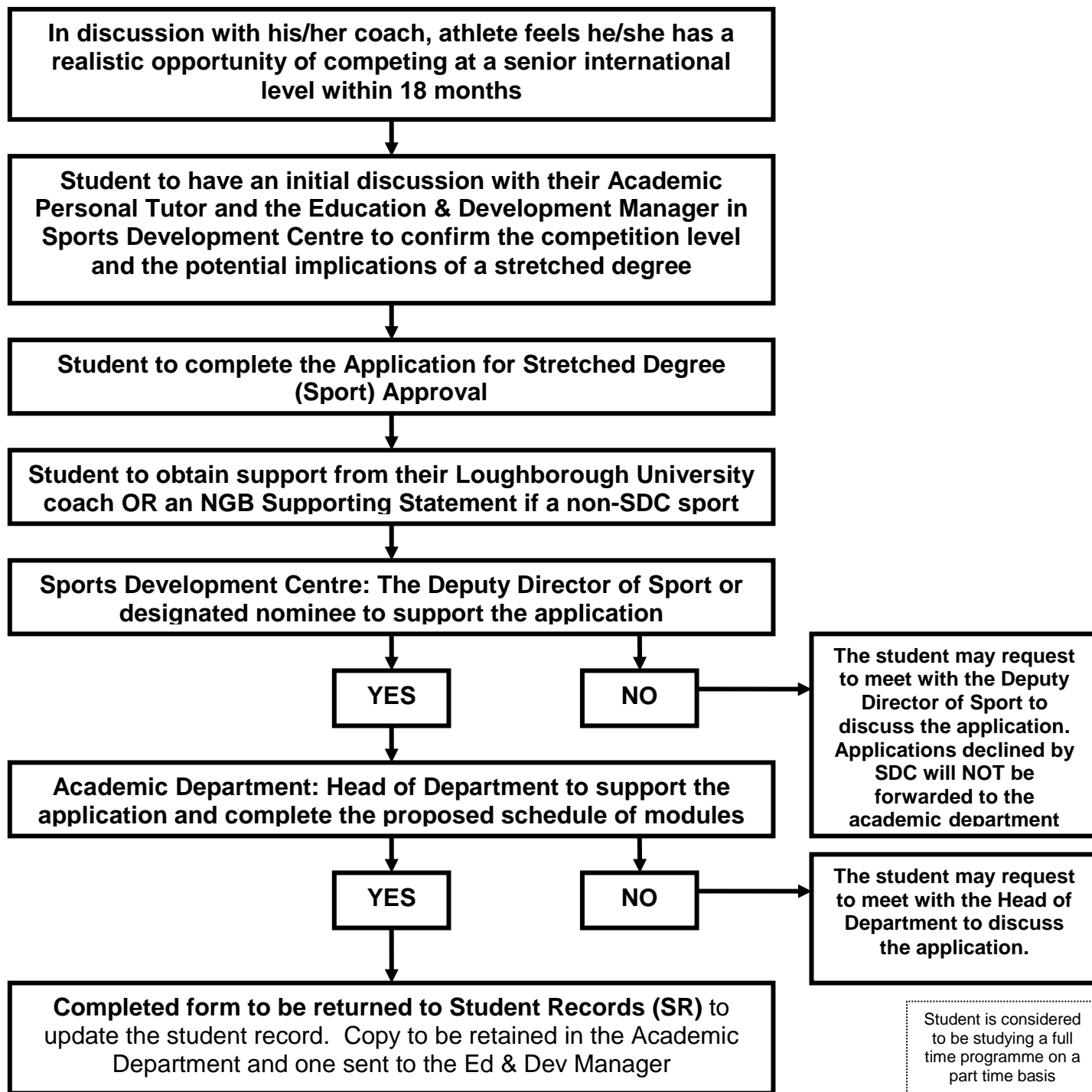


# STRETCHED DEGREE (SPORT) PROCESS



In keeping with the expectation that student-athletes will be organised and proactive, **the deadline for a stretched degree to be approved is 15 September before the start of each academic year** unless there are exceptional circumstances.

Notes for Student Consideration:

- It is **your responsibility** to keep in regular touch with your Personal Tutor and keep them informed of your academic progress
- You will still be required to attend all aspects (lectures, tutorials, class tests etc) of the modules you are undertaking
- There may be implications relating to progression or reassessment relating to your stretched degree and you should ensure you fully understand these. In particular there may be implications relating to the timing of your reassessment rights should you fail a module.
- Council Tax – When stretching your degree you remain registered on a full time programme and as such your student status will not change for council tax purposes. Loughborough University can not be held responsible for any changes in these decisions or any financial implications.
- Return for the 2nd half of your 'stretched year' will be with a different year group and therefore you may have to make new friends

**Any queries please contact Simon Wombwell, Education and Development Manager in SDC (s.l.r.wombwell@lboro.ac.uk, 01509 226103)**